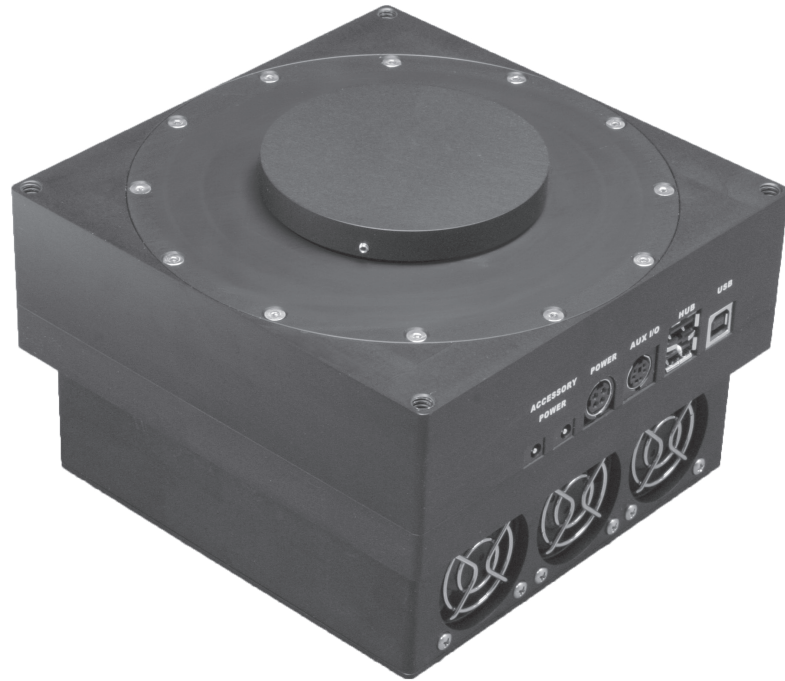


4096 x 4096 Imaging Array Size 9 μm Pixel Size

ProLine sets the standards in key performance areas that include: Download Speeds, Cooling, Low Noise Operation, Anti-Ghosting Technology, Image Quality, and Linearity. ProLine download speeds are fast while maintaining low-noise frame quality. ProLine achieves outstanding cooling without water assist. Simply set the ProLine cooling where you want it and the camera will do the rest – quickly and without worries. ProLine frame quality is second to none thanks to careful design, implementation and setup. All cameras are assembled in our clean room under exacting conditions and must pass a battery of tests before being shipped.



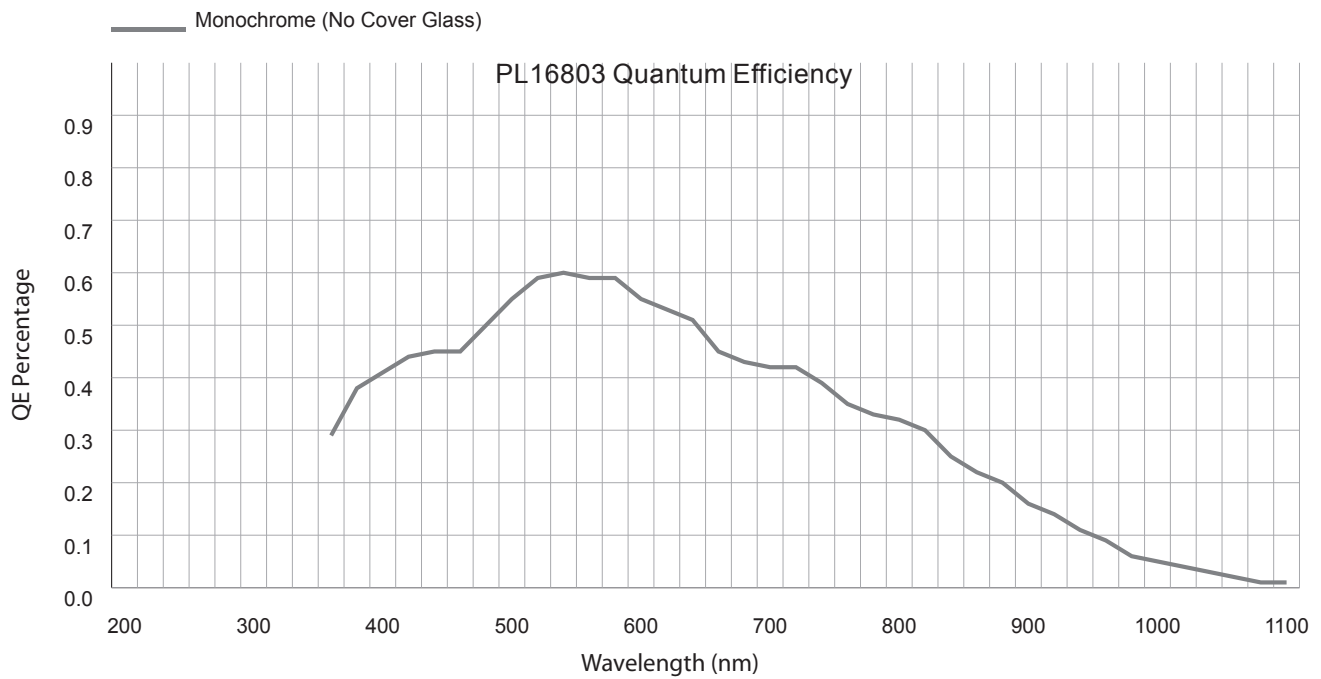
Applications

- | | |
|---------------------|-------------------------|
| Digital Radiography | Gel Documentation |
| Astronomy | Forensic Imaging |
| Bioluminescence | Satellite Imaging |
| Chemoluminescence | Low Light Level Imaging |

Features	Benefits
Up to 8 MHz Download Speed	Fast image capture with full 16-bit resolution
4096 x 4096 Array Size / 9 μm Pixel Size	Resolves fine detail
Flexible Binning and Readout	Increases frame rate
Thermoelectric Cooling to -60° C	Excellent low-noise imaging
Excellent Quantum Efficiency	High sensitivity for fast image acquisition
F-Mount Available	Offers a wide variety of optical choices
Acquisition Software	Supplied with camera and includes our open source SDK
USB 2.0 Interface	Industry standard connectivity, fast data transfer



Quality. Cooled. Cameras.

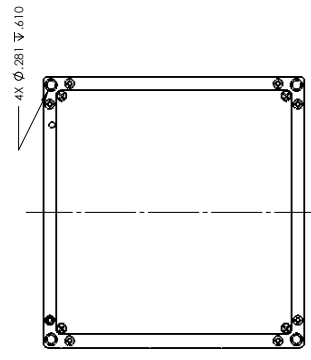
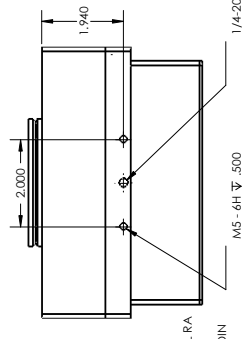
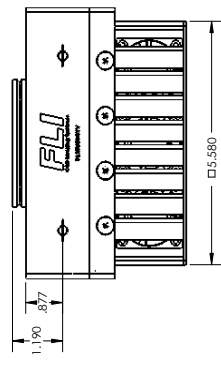
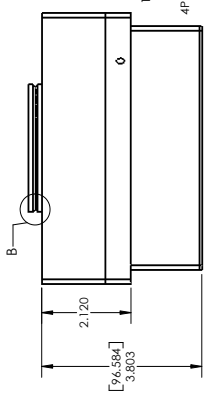
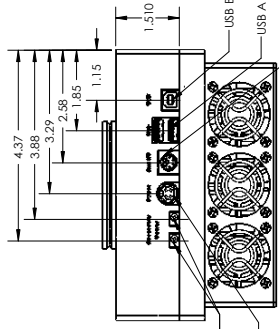
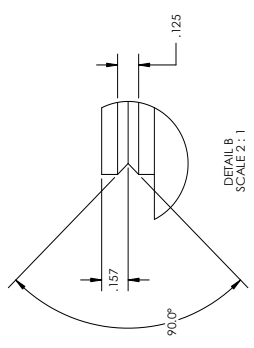
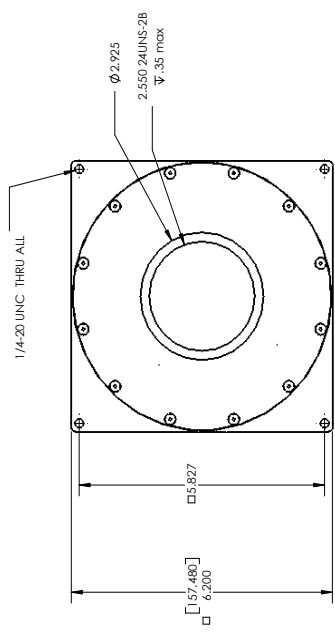
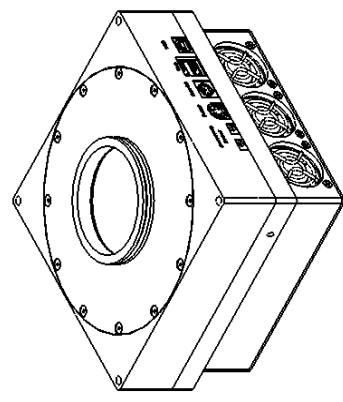


PL16803 Specifications	
Sensor	KAF-16803
Array Size	4096 x 4096
Pixel Size	9 μ m
Typical Maximum Cooling	-60° C Below Ambient
Typical Download Speeds @ 16-bit	1 MHz, 8 MHz (other speeds available)
Typical System Noise	10 e- RMS @ 1 MHz
Nonlinearity	<1%
Temperature Stability	0.1° C
Operating Environment	-30° C - 45° C 10% - 90% Relative Humidity
Sensor Manufacturer	Kodak
CCD Grades Available	Standard
CCD Type	Front Illuminated
Color/Monochrome	Monochrome
Mega Pixels	16.8
Sensor Diagonal	52.1 mm
Linear Full Well	100,000 e-
Typical Dark Current	<0.07 e-/pixel/sec. @ -35° C
Blooming Protection	> 100X Saturation Exposure
Available Shutters	65 mm
Shutter MTBF	1,000,000
Remote Triggering	Standard
Power	12v
Interface	USB 2.0
Dimensions	6.2 x 6.2 x 3.8 (157.48 x 157.48 x 96.52)

* Due to continuous development all specifications subject to change



REV	DESCRIPTION	DATE
A	ASSEMBLY DRAWING	12/20/2008



LINES OR DIMENSIONS SPECIFIED:		NAME	DATE
QUANTITY	UNIT	REC.	DATE
ANGULAR DIMENSIONS	IN DEGREES		
SCALE	AS SHOWN		
THREADS	PER INCH		
PLACEMENT	AS SHOWN		
FINISH	AS SHOWN		
PROPERTY AND CONSTRUCTION INFORMATION CONTAINED HEREIN IS THE PROPERTY OF FLI AND IS TO BE KEPT CONFIDENTIAL WITHOUT THE WRITTEN PERMISSION OF FLI.			
DRAWING NO.		SCALE: 1:2	
ASSY_PL(X)_65MM_AC		WEIGHT:	
REV		SHEET 1 OF 1	
A			

TITLE:		PL(X) 65MM	
Camera Assy		WHITE (A) - 1000000	
PROLINE			
DRAWN		CHECKED	
ENGINEER		APPROVED	
DATE		DATE	
PROJECT		PROJECT	
SHEET		SHEET	
OF		OF	
1		1	